

Here Is Why You Want To Make Inversions

Jazz Chords
Jens Larsen
www.jenslarsen.nl

Standard tuning

♩ = 120

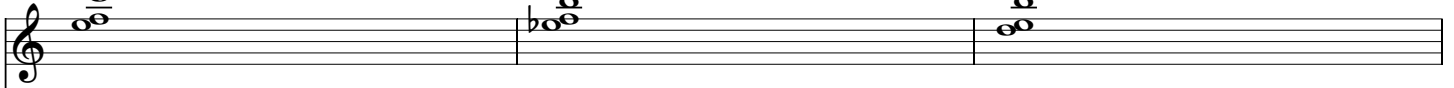
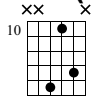
Dm7(9)	Dm7(9)
T 5 A 5 B 5	5 5 3

Dm7(9)	Dm7(9)	Dm7(9)
T 5 A 5 B 3	6 9 10	13 10 14

Dm7(9)	G7(b13)	Cmaj7(9)
T 5 A 5 B 3	4 4 3	3 4 2

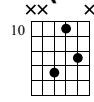
Dm7(9)	G7(b13)	Cmaj7(9)
T 6 A 9 B 10	6 8 9	5 7 9

Dm7(9)



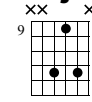
T	13		
A	10		
B	14		

G7(b13)



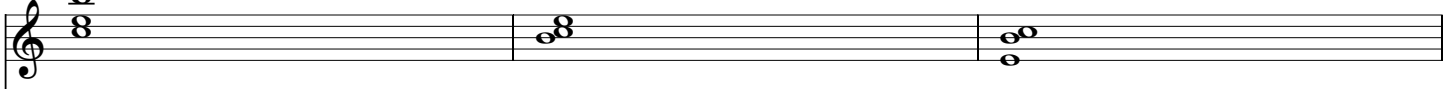
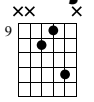
T	12		
A	10		
B	13		

Cmaj7(9)



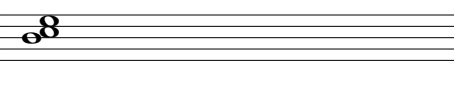
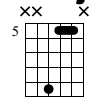
T	12		
A	9		
B	12		

Cmaj7



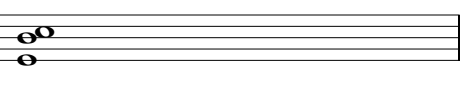
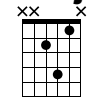
T	12		
A	9		
B	10		

Cmaj7



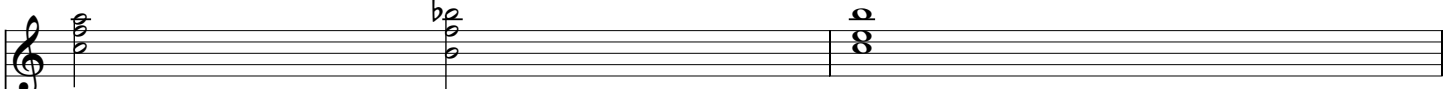
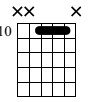
T	5		
A	5		
B	9		

Cmaj7



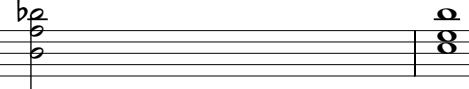
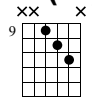
T	1		
A	4		
B	2		

Dm7



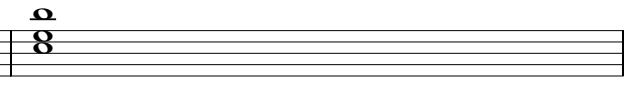
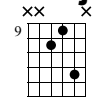
T	10		
A	10		
B	10		

G7(#9)



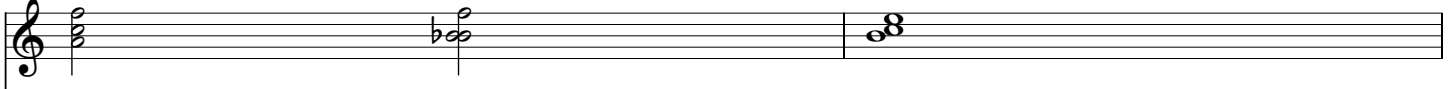
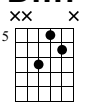
T	11		
A	10		
B	9		

Cmaj7



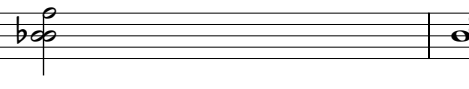
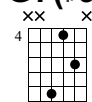
T	12		
A	9		
B	10		

Dm7



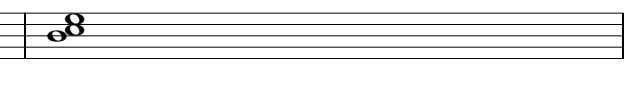
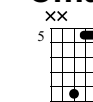
T	6		
A	5		
B	7		

G7(#9)



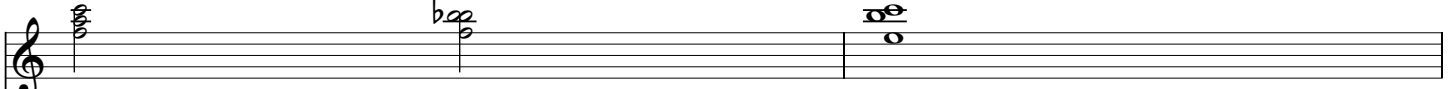
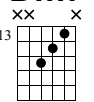
T	6		
A	4		
B	8		

Cmaj7



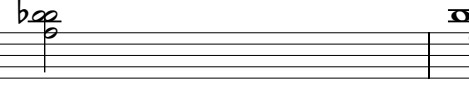
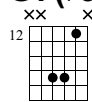
T	5		
A	5		
B	9		

Dm7



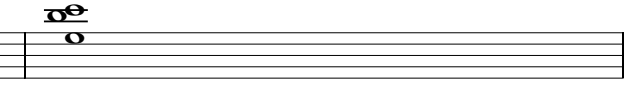
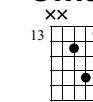
T	13		
A	14		
B	15		

G7(#9)



T	12		
A	15		
B	15		

Cmaj7



T	13		
A	16		
B	14		

Dm7(11) **Dm7(9)** **G7(b9)** **G7(#9)** **G7(#11,b9)** **G7(#9)** **Cmaj7** **C⁶/9**

T 1 5 8 6 9 11 12 10
 A 0 2 4 4 7 7 9 9
 B 3 3 6 8 11 9 10 12

Dm(9) **Dm7(11)** **G7(#9)** **G7(b9)** **Cmaj7(9)**

T 6 8 6 8 5
 A 9 7 4 4 7
 B 7 7 8 6 9

Dm7(9) **G7(b5)** **CMaj7(9)**

T 6 6 5
 A 9 6 5
 B 10 9 9

Dm7(9) **G7(b5)** **Cmaj7(9)**

T 13 12 12
 A 10 10 9
 B 14 11 12 10

Dm7(9) **G7(b5)** **Cmaj7(9)**

T 5 2 3
 A 5 4 4
 B 3 3 2